



GAME DAY PROGRAMME




**SATURDAY
27TH APRIL 2024**



SNRD DOUBLE HEADER

**TIER 2 NORTH
NEWCASTLE CANNY BELTERS VS
HALLAM HELLCATS**

**FOLLOWED BY
MIDDLESBROUGH & FRIENDS VS
BEYOND BORO CHALLENGE TEAM**

 [nclrollerderby](#)
 [nclrollerderby](#)
 [nclrollerderby](#)



These times are subject to change.

TIMINGS:

13:00 DOORS OPEN

**13:30 GAME 1 starts:
Newcastle Roller Derby Canny Belters
VS Hallam Hellcats**

**15:45 GAME 2 starts:
Middlesbrough Roller Derby & Friends
VS Beyond Boro Challenge Team**

17:30 Tidy Up! (all hands on deck please!)

18:00 Vacate Hall

18:15 After Party - The Sandstone Nab Pub

A roller derby game consists of 60 minutes of play, divided into two 30-minute periods with a halftime between them.

HELLO & WELCOME

...to Newcastle Roller Derby's Tier 2 SNRD double header day, with a big thank you to our friends at Middlesbrough Roller Derby for lending us their venue!

Leading the day is our A-team, the Canny Belters, playing Hallam Hellcats. Following that, Middlesbrough Roller Derby and Friends play against Beyond Boro – a challenge team of mixed level skaters from all over the North.

We hope you have a great day with us and enjoy the games - we're sure they'll keep you entertained!

f [nclrollerderby](#)
@ [nclrollerderby](#)
t [nclrollerderby](#)

Image credits
Cover: Dave Moore
Above: Dave Moore, Life Thru Argo's Lens

Officials

Referees Game 1:

HR/RIPR: Tiny
FIPR: Hakuna
JR: Glitter is Here
JR: Matt
OPR: Doug
OPR: Astron'Amy
OPR: Taurus

Referees Game 2:

HR: Tiny
FIPR: Hakuna
JR: Glitter is Here
JR: Matt
OPR: Ange
OPR: Astron'Amy

NSOs Game 1 and Game 2:

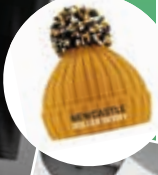
HNSO/PW: Dropkick Bru's
JT: Vendetta
SBO: Parking Fine
SK: Lawless
SK: Esme
PLT: Smedley
PLT: Skate or Die
PBM: Mario
PBT: Laura
PBT: Peng

Newcastle Roller Derby would like to say a big thank you to all the Referees, Non-Skating Officials (NSOs), volunteers and announcers helping today's event run smoothly. Everyone here today is volunteering their time to facilitate our wonderful sport, and for this we're very grateful.

SUPPORT LOCAL ROLLER DERBY



NEW MERCH!



You can support Newcastle Roller Derby by buying some of our fabulous new season merch, purchasing something from the cake stall, buying a raffle ticket, playing Ducks, or by bringing all of your friends and family to our next home game. Stay up to date with our social media to find out when our next game will be. You can also join our mailing list to hear about future games.

- f nclrollerderby
- @ nclrollerderby
- 🐦 nclrollerderby

CHUCK A DUCK AND WIN!
£1 PER DUCK!

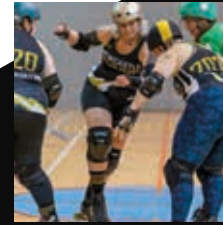


If you are interested in donating or sponsoring us further please contact us on <https://www.newcastlerollerderby.co.uk/support-us/>

After PARTY!

Join us for after game Pub drinks/celebrations around 6.15pm onwards, just round the corner from Eston Leisure Centre. Everyone welcome!

Sandstone Nab, Trunk Rd,
Middlesbrough TS6 6TD



WE ARE NEWCASTLE ROLLER DERBY



Newcastle Roller Derby is an athletic and social non-profit organisation, striving for athletic excellence and competitive success in the growing world of roller derby. We're proud of our team, city and culture.



Photography credits: Life Thru Argo's Lens, Roller Derby on Film, Alla Maistrenko, Dave Moore

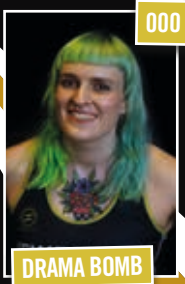
What's in a (Roller Derby) Name?

Although roller derby is a relatively new sport in the grand scheme of things, it has a rich history. This history includes a right of passage for new skaters in selecting their skating name. They're printed on our skaters shirts, so check them out. What could be your roller derby name?



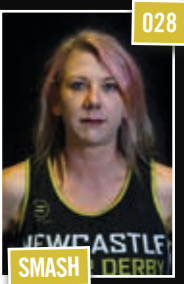
NEWCASTLE ROLLER DERBY

CANNY BELTERS



000

DRAMA BOMB



028

SMASH



1038

KASTASTIC



11

HELEN DREW



2122

HOOLIA



22

THE ROTTWHEELER



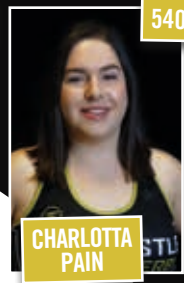
27

HIT ONE PURL ONE



314

LUCY



540

CHARLOTTA PAIN



558

HELL BLOCK H



5678

DARCEY TUSSLE



66

JO BESERK



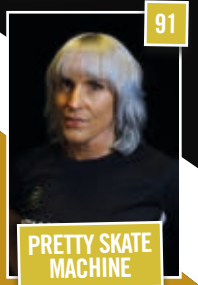
79

SPANGLED



82

SHREDD



91

PRETTY SKATE MACHINE



BENCH:

MOO



LINE UP:

GEMMA



STATS:

FRANKIE JAKS

HALLAM HELLCATS

LINKTR.EE/HALLAMHELLCATS



WILMA WHEELMOVE
#0 SHE/HER



ANSSELL
#9 SHE/THEY



OLIVE A SUDDEN
#14 SHE/HER



ABBOTTOIR
#16 SHE/HER



MABEL IN A CHINA SHOP
#1907 SHE/HER



NOO MATIC
#22 SHE/HER



SMED SMASH
#23 SHE/HER



GOLDBLOCKS
#324 SHE/HER



JENUINE ARTICLE
#34 SHE/HER



FAETAL ATTRACTION
#36 SHE/HER



SMITH
#46 SHE/HER



STORM COOPER
#421 SHE/HER



BOBCAT
#588 SHE/HER



KILLER REE
#64 SHE/HER



RIVA STYX
#666 SHE/HER



KERFOOT
#73 SHE/HER



GRIMBLOK
#83 SHE/HER



CARNAGE
#800 SHE/HER



FEEVER BITCH
#99 SHE/HER



ROLA CROFT
#75 SHE/HER



PANICI
#1102 THEY/THEM



STUNTMAN COACH



MIDDLESBROUGH ROLLER DERBY & FRIENDS



DRAMA BOMB

000



TAURUS APART

0



PEREGRINE

104



TREV

13



MEAD

14



POCKET ROCKET

18



VILLANELLE

22



WEE JIMMY CLANKY

232



HENRY

3



D'JENERET

5



WHEEZY

505



TIPPY

511



STIX

69



KNOX

85



SUDRON

86



BENCH:

BETH WILSON



LINE UP:

CHRIS SMITH

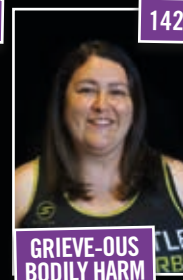


BEYOND BORO CHALLENGE TEAM



CHEWIE

081



GRIEVE-OUS BODILY HARM

1420



HELLAVATOR

15



F-BOMB

19



JOCK N ROLL

2009



SLAMROCK

23



FRANKENMEANIE

2420



ZABOTAGE

248



HIT ONE PURL ONE

27



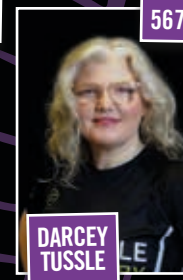
EGG ROLLS

399



HELL BLOCK H

558



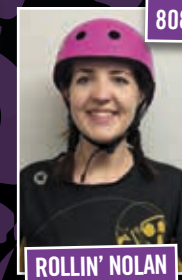
DARCEY TUSSLE

5678



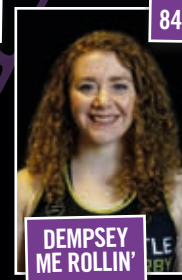
ROLA CROFT

75



ROLLIN' NOLAN

808



DEMPSEY ME ROLLIN'

84



FRANKIE JAKS

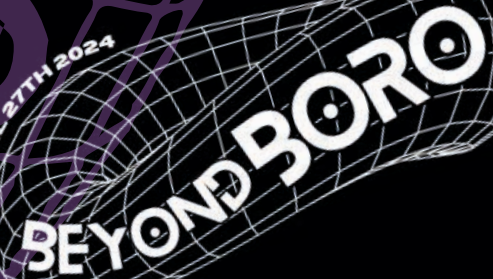
BENCH:



RHI

LINE UP:

APRIL 27TH 2024



CHALLENGE TEAM

ROLLER DERBY EXPLAINED

Roller derby is a contact sport played by two teams of up to 15 players. The game is played in a counter-clockwise direction around an oval track.

The game consists of two halves of 30 minutes with each half consisting of a series of short **Jams**, with each jam lasting a maximum of two minutes.

At the start of each jam each team fields five players; four blockers and one jammer.

The jammer is the skater who scores points by lapping the players on the opposing team. The blockers attempt to hinder the opposing jammer while assisting their own jammer: playing both defence and offence at the same time.

The first jammer out of the pack gains **lead jammer** status for that jam which means they have the ability to strategically **call off the jam**. However, if the jammer goes to the penalty box, they lose that lead jammer status.

The first lap of the track is called the **Initial pass** and no points are scored.

Once a jammer has completed their initial pass, they can score points. A jammer scores one point for each player of the opposing team they pass as long as they do it **in bounds and legally**.

Jammers continue to skate round the track scoring points for the full two minutes of the jam or until the lead jammer calls off the jam. The lead jammer does this by **repeatedly placing both their hands on their hips**.

JAMMER

The jammer is the player wearing the **Star Helmet Cover** on their helmet. They always start each jam behind the jam line behind the pack. The lead jammer is the first jammer to get through the pack and the opposing team's blockers legally. The lead jammer (only) can call off the jam to prevent the other jammer from scoring points.

PIVOT

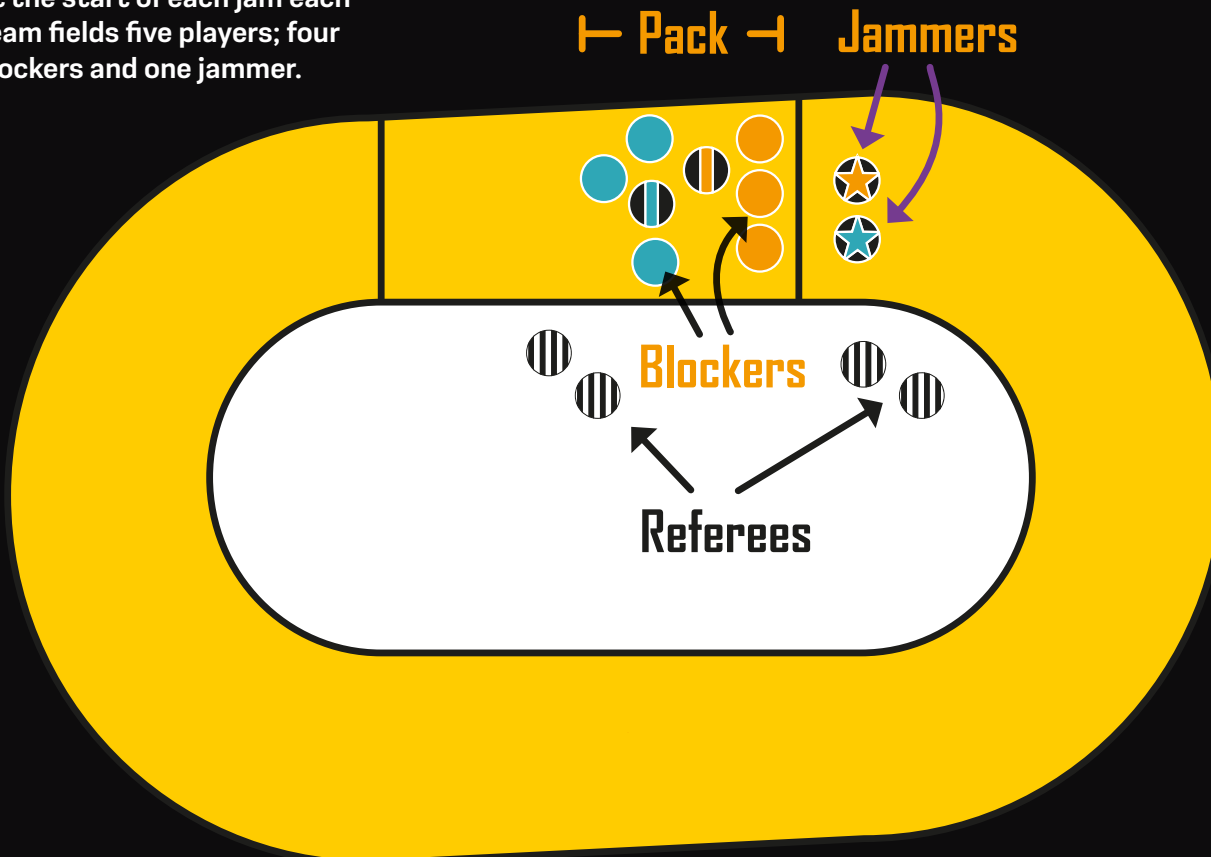
The pivot is a blocker and can be identified by the **Stripe Helmet Cover** on their helmet. They can be converted to a jammer during a jam if a legal **Star Pass** manoeuvre is successful.

BLOCKER

Blockers prevent the opposing jammer from passing through the pack while assisting their jammer to get through at the same time. They are responsible for maintaining the pack.

PENALTIES

Referees determine penalties. A penalty will land a player in the penalty box for 30 seconds. A penalty is when a player's actions significantly affects game play. If a jam ends before a player gets out of the box, the player remains in the penalty box during the subsequent jam until the penalty is completed.



PHOTOGRAPHER:



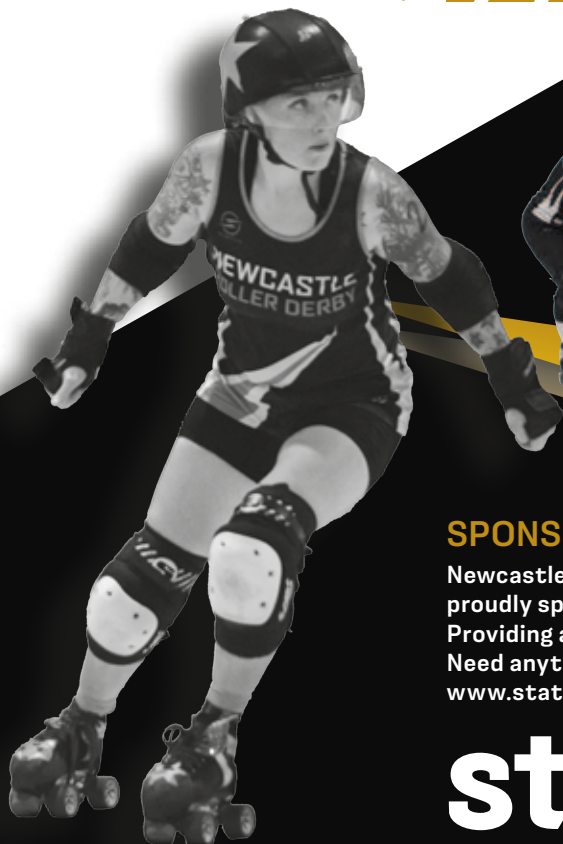
Alla Maistrenko

@ alla_maistrenko_photographer

@ allamaistrenko_dogs

BE WARNED!

Sitting in the track side seats is a great way to view the action, but the chances of being hit by a skater are higher and as such they are strictly for over 18s. Anyone in the audience who grabs or interferes with any skater or official in any way will be immediately ejected without a refund, so please stay behind the line!



SPONSOR:

Newcastle Roller Derby are proudly sponsored by Statex Colour Print. Providing all our posters, flyers and programmes. Need anything printing? Look them up!
www.statex.co.uk

statex COMPLETE
PRINT
SOLUTIONS