

HOSTED BY NEWCASTLE ROLLER DERBY

EURO CLASH

28-29TH MARCH 2026



£2



TIGER BAY BRAWLERS



★ **5 TEAMS, 9 GAMES EVERYTHING TO PLAY FOR!** ★
★ **TOURNAMENT PROGRAMME** ★

Clementine

Property taken care of

WE'RE LOCAL WE'RE QUALIFIED WE TURN UP

- ✓ Membership Plans
- ✓ Boiler Care, Plumbing, Electrics
- ✓ Property Maintenance
- ✓ No hidden exclusions,
No small print



CALL 0191 323 3398

VISIT [clementine.services](https://www.clementine.services)



Checkatrade



WELCOME TO EUROCLASH 2026!

**TWO DAYS. FIVE TEAMS.
NINE GAMES. ONE
UNFORGETTABLE WEEKEND.**

We are Newcastle Roller Derby,
and we are so proud to be your hosts.

This weekend, the Walker Activity Dome becomes the beating heart of European roller derby, with teams travelling from Berlin, Gothenburg, northern France and Cardiff. We couldn't be more excited to have them here for nine WFTDA-sanctioned games at a crucial point in the season, as teams set their sights on a place at European Playoffs.

For us, EuroClash is more than just the tournament action on track. It's a chance to bring together our community, share the sport we love, and create a brilliant atmosphere for everyone here at the Walker Activity Dome. Whether you're a long-time fan or completely new to roller derby, we're glad you're here, and we hope you have the best weekend with us!

EURO
CLASH



EURO
CLASH



EURO
CLASH



EURO
CLASH



EURO
CLASH



SPONSORS & SUPPORT...

We'd like to say a big thank you to our sponsors for supporting EuroClash 2026.



TOURNAMENT SPONSOR

Clementine Services is proud to sponsor EuroClash 2026. Just like a strong pack on the track, their skilled team keeps homes and businesses running smoothly - handling everything from plumbing and electrics to roofing and renewables.

Reliable, quick and always up for the challenge, Clementine is a perfect partner for keeping the action going both on and off the track.

Clementine

TRACK SPONSOR

5th Blocker Skates, Glasgow's dedicated roller derby skate shop, keeps the skate community rolling with expert advice, quality gear, and a real passion for the sport - supporting skaters at every level, from the very first roll to game days and beyond.



OUR MEDICAL SUPPORT IS PROVIDED BY






FSNE Medical provide professional event medical cover and emergency ambulance services nationwide, bringing trained paramedics, rapid response units and clinical support to keep skaters and spectators safe at EuroClash 2026.

BE WARNED

Sitting in the track side seats is a great way to view the action, but the chances of being hit by a skater are higher and as such they are strictly for over 18s. Anyone in the audience who grabs or interferes with any skater or official in any way will be immediately ejected without a refund, so please stay behind the line!

Programme Image credits:

Life thru Argo's lens, Roller Derby on Film, Alla Maistrenko, Dave Moore, Real Time Events, Lara Shardlow, Paul Jones

 @nclrollerderby
 @nclrollerderby
 @nclrollerderby

EUROCLASH GAME SCHEDULE

SATURDAY

DOORS AT 9AM

GAME	TIME	TEAMS
Game 1	9:30am	Lomme V Tiger Bay
Game 2	11:30am	Newcastle V Bear City
Game 3	1:30pm	Göteborg V Lomme
Game 4	3:30pm	Bear City V Tiger Bay
Game 5	5:30pm	Newcastle V Göteborg

SUNDAY

DOORS AT 8:30AM

GAME	TIME	TEAMS
Game 6	9am	Lomme V Bear City
Game 7	11am	Newcastle V Tiger Bay
Game 8	1pm	Tiger Bay V Göteborg
Game 9	3pm	Newcastle V Lomme
>	5-5:30pm	Awards & Thank yous

AFTERPARTY!

ZEROX

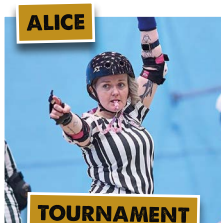
7pm - 3am

Newcastle Quayside
48-52 Sandhill, NE1 3JF

OFFICIALS & VOLUNTEERS

We are super excited to be supported by some of the best referees, NSOs, announcers, photographers and videographers from across Europe.

Newcastle Roller Derby would like to say a big thank you to them all, as well as all the other volunteers from our league, other leagues and the wider roller derby community for helping to make EuroClash run smoothly.



ALICE

TOURNAMENT HEAD REFEREE



Hakuna **YOUR Tatas**

TOURNAMENT HEAD NSO

YOUR EUROCLASH CREW A ARE:



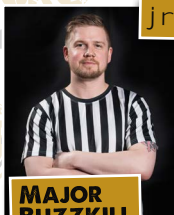
IPR

JEAN-QUAD GRAND SLAM



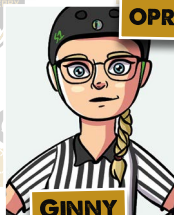
JR

TARAO



jr

MAJOR BUZZKILL



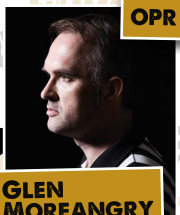
OPR

GINNY



OPR

MARTIN MCFLY



OPR

GLEN MOREANGRY



JT

OI YOU



PLT

BAIN IN THE ASS



PLT

STICKS & STONER



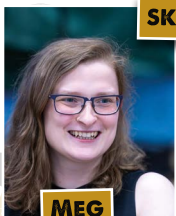
SBO

ERRINGTON



SK

FEARLEADER



SK

MEG



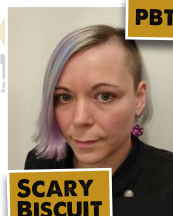
PBM

PRETTY MIFFED



PBT

EMILY OF THE STATE



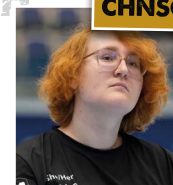
PBT

SCARY BISCUIT



CHR

IRON MAEVEN



CHNSO













TRASH PANDA

ABBREVIATIONS:

THNSO: Tournament Head NSO
 THR: Tournament Head Referee
 CHR: Crew Head Referee
 IPR: Inside Pack Referee
 JR: Jammer Referee
 OPR: Outside Pack Referee

CHNSO: Crew Head NSO
 JT: Jam Timer
 PLT: Penalty/Lineup Tracker
 SBO: Scoreboard Operator
 SK: Score Keeper
 PBM: Penalty Box Manager
 PBT: Penalty Box Timer

YOUR EUROCLASH CREW B ARE:

 CHR CAPTAIN ROBVIOUS	 CHNSO SWEARWOLF			
 IPR TEMERAIRE	 JR GLITTER IS HERE	 JR HOMO YOU DIDN'T	 OPR MACFARLANE	 OPR WONDER ZEBRA
 OPR GERMAN ANGST	 JT X-RAY TED	 PLT BOOKHER DEWITT	 PLT BETH CASE SCENARIO	 SBO MOWGLI
 SK GASTON	 SK FLORA	 PBM LULA	 PBT PEACEBREAKER	 PBT SHERIDACTYL

ANNOUNCERS

Bringing the noise all weekend is our announcers crew, led by Head Announcer Sven. From fast-paced live game commentary to behind-the-scenes insights and plenty of derby chat in between, they'll keep you locked into the action and the atmosphere from the first whistle to the final jam.



YOUR EUROCLASH ANNOUNCERS ARE:



PHOTOGRAPHY CREW

Capturing every hit, hustle and high-energy moment of EuroClash 2026 is our talented photography team, led by Head Photographer Life Thru Argo's Lens.

From on-track action to behind-the-scenes glimpses (yes Argo... we're looking at you for the unflattering snacking shots!) - they'll be freezing the weekend's unforgettable moments so fans and skaters can relive the excitement long after the final whistle.

LIFE THRU ARGO'S LENS



HEAD PHOTOGRAPHER



TRACK & TRAIL SPORTS PHOTOGRAPHY



ROLLER DERBY ON FILM



MIKI ALICE PHOTOGRAPHY



PAUL JONES PHOTOGRAPHY

STREAMING INFORMATION

EuroClash 2026 is being streamed live all weekend by Skimbles, Sixty Quad Bit and Sven.

You can watch every game over on Skimbles' YouTube channel so you won't miss a moment of the action - wherever you are.

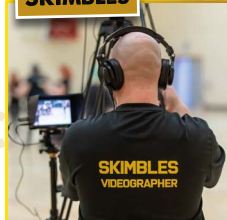
Scan the QR code to watch live and follow the action all weekend.

A huge thank you to the streaming team wizards for bringing EuroClash 2026 to fans near and far, we couldn't do it without you.

CAN'T MAKE IT TRACKSIDE OR WANT TO RELIVE THE ACTION? WE'VE GOT YOU COVERED...

Our Streaming Wizards...

SKIMBLES



NEWCASTLE ROLLER DERBY

SIXTY QUAD BIT



LIFE THRU ARGO'S LENS



SVEN



NEWCASTLE ROLLER DERBY

CANNY BELTERS

BENCH:



ZOE ASTLE

BENCH:

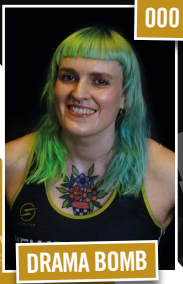


DOG

LUM:



EMILY STILE



000

DRAMA BOMB



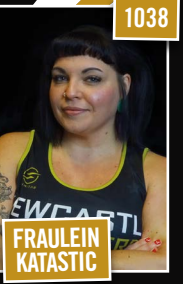
013

LOCKDOWN



028

SMASH



1038

FRAULEIN KATASTIC



104

PEREGRINE



11

HELEN DREW



135

TINKREBELLE



1420

GRIEVE-OUS BODILY HARM



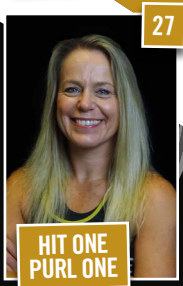
2122

HOOLIA



22

THE ROTTWHEELER



27

HIT ONE PURL ONE



314

LUCY



495

ERADI-CAIT



540

CHARLOTTA PAIN



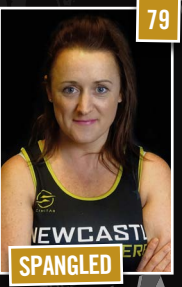
5678

DARCEY TUSSLE



6

FIFI LA BOMB



79

SPANGLED



82

SHREDD



86

SUDRON



91

PRETTY SKATE MACHINE



LOMME ROLLER DERBY BAD BUNNIES

BENCH COACH



ROGER



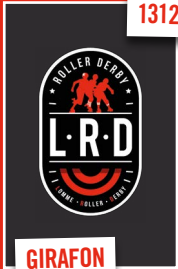
10

KAIJÜLIE



123

MA POOL



1312

GIRAFON



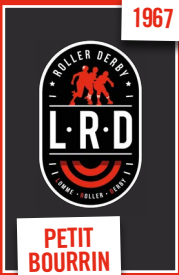
16

BRUTUS



161

ANNA
KARABINE



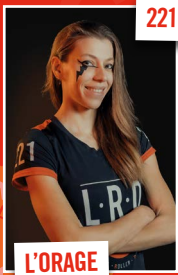
1967

PETIT
BOURRIN



2046

CIS-TITE



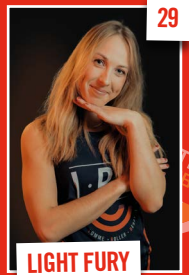
221

L'ORAGE



25

MASH MALO



29

LIGHT FURY



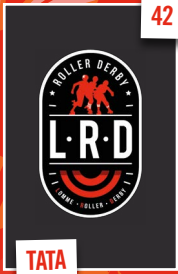
2936

THE BAD
LEBOWSKI



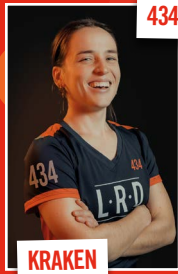
3

BELZEP



42

TATA



434

KRAKEN



525

GOUDA



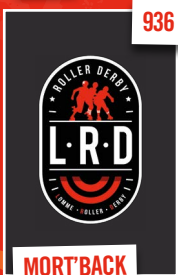
7

QUEERACIER



85

NAN J'RIGOLE



936

MORT'BACK



99

PIM DETER



TIGER BAY BRAWLERS

ALL STARS

TIGER BAY BRAWLERS

BENCH:



STEPH HOWARTH

BENCH CREW:

SPRINTS

KEY

BAXTER



NUKA



CRASH LANDERS



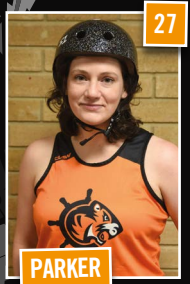
DOS SANTOS



CARYSMATIC



ROGUE RUNNER



PARKER



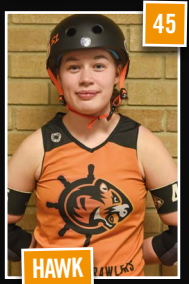
PLANT



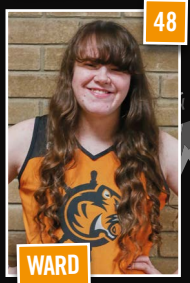
KID



BOSH



HAWK



WARD



ENEMY



WILD



EVANS



PIP GRAY



GEORDIE



THORNE



ANGIE



KEMP



ANGEL



BEAR CITY ROLLER DERBY

BENCH CREW:



ANNA



DANIEL



KRAVA



DESCARO

11



MAYA
MANGLEYOU

1111



FRIDI
MERCURY

114



FREUDIEN
SLIT

1337



KATYUSHA

181



MINNESOTA
NASTY

1858



BAMBICKEL

21



ESCALADE

24



MIA MISSILE

25



SKAROTEENA

254



ZOE SAWITZKI

28



THE
RAZOR

3



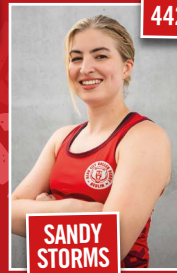
MISS
GENDER

313



ROUFLESS

379



SANDY
STORMS

442



ZSU ZSU
GABOOM

452



ROOKIE
HORROR

53



BLOCKT
HERTA

599



GLITTER
SHITTER

66



TABS

72



GÖTEBORGS ROLLER DERBY A TEAM



FRÖKEN
FRÄKEN



FRED FINTA



KATTRIARKEN



STOPPLESS



BELIN



BUMBLEBEE



PRINSEN



MALICE BABS



PAIN
GRETZKY



ÄRTAN



MÅRRAN



FEMMAN



SNAGGE



KAFKA



SYSTER
LYSTER

BENCH CREW:



MITHRA



BILEN



CHIPS

NEWCASTLE
ROLLER DERBY



BEFORE THE LAST WHISTLE BLOWS

EVENTS LIKE THIS DON'T HAPPEN BY ACCIDENT. THEY HAPPEN BECAUSE OF PEOPLE.

So before the last whistle blows, we want to take a moment to say thank you.

To our sponsors - your belief in grassroots women's sport makes everything possible.

To our incredible officials and volunteers working tirelessly behind the scenes - this weekend runs on your passion and dedication, and we're so grateful.

To our visiting teams: Bear City, Göteborg, Lomme and Tiger Bay Brawlers - thank you for making the journey. You've crossed borders to compete with us, and that means everything. We hope the Toon treats you well!

And to you, our fans, our community, our derby family near and far - thank you for showing up. Whether you've followed this sport for years or you've picked up this programme wondering what on earth roller derby is, you're in the right place.

By being here this weekend, you're doing more than watching sport, every ticket sold goes directly back into our league and into growing roller derby in the North East. You're helping us keep the wheels turning, support the next generation of skaters and make sure events like this keep happening. Until the next time...


With love,

Newcastle Roller Derby  

WE WOULD LOVE TO HAVE YOUR FEEDBACK ON EUROCLASH 2026!



Please follow this QR code to the short form (only 8 questions!)

Thanks and love from NRD. x 

We Print While You Wait...

High Quality & Great Value Printing.

 metrorepro

Call: 0191 261 1320

MERCH ALERT!!! MERCH ALERT!!! MERCH ALERT!!! MERCH ALERT!!! MERCH ALERT!!!



MERCH ALERT!!! MERCH ALERT!!! MERCH ALERT!!! MERCH ALERT!!! MERCH ALERT!!!

TAKE A PIECE OF THE TOON HOME WITH YOU!

Don't leave without grabbing yourself a little slice of EuroClash!

From bold event tees and art prints packed with Geordie pride, to stickers and beanies to keep the vibes going - our merch stall is running all weekend!

As well as our base range of Newcastle Roller Derby merch, make sure you check out our EuroClash range and the collaboration pieces created with local illustrator Tilartt, whose brilliant designs celebrate everything we love about Newcastle and roller derby. Swing by, treat yourself, and remember: every purchase goes straight back into Newcastle Roller Derby and helps keep our sport thriving in the North East. Proper belta, like. ♥



Chuck a Duck and win!
£1 per duck!

JOIN IN OUR CHUCK A DUCK GAME!

After PARTY!



Join us for our epic after party at Xerox, Newcastle from 7pm - 3am on Sunday!

Xerox
Newcastle Quayside
48-52 Sandhill
NE1 3JF

EUROCLASH BINGO!

JUST FOR FUNSIES!
THE PRIZE IS THE GLORY OF FINDING THEM ALL.



JAM CALLED OFF IN MID AIR	DERBY DOG	BIG BEARDS	TEARS	RUBBER DUCKS
CUT TRACK PENALTY	180 APEX JUMP	20 POINT JAM	SUCCESSFUL OFFICIAL REVIEW	FOUL OUT
REF JUMPS OVER A SKATER	DANCING ON TRACK	A GOLD HELMET	JAMMER ON JAMMER HIT	ROLLER DERBY RELATED TATTOO
SINGING	A GEORDIE	LEAD CHANGE	JAM CALLED OFF FROM THE GROUND	A STAR PASS
MEXICAN WAVE	GLITTER	CAKE	AWESOME HAIR	EURO CLASH MERCH WHY NOT GO AND GRAB SOME FOR YOURSELF?

TICK THEM OFF AS YOU FIND THEM, CAN YOU GET A CLEAN SWEEP OVER THE FULL WEEKEND? GO ON... WE BET YOU CAN!

ROLLER DERBY EXPLAINED

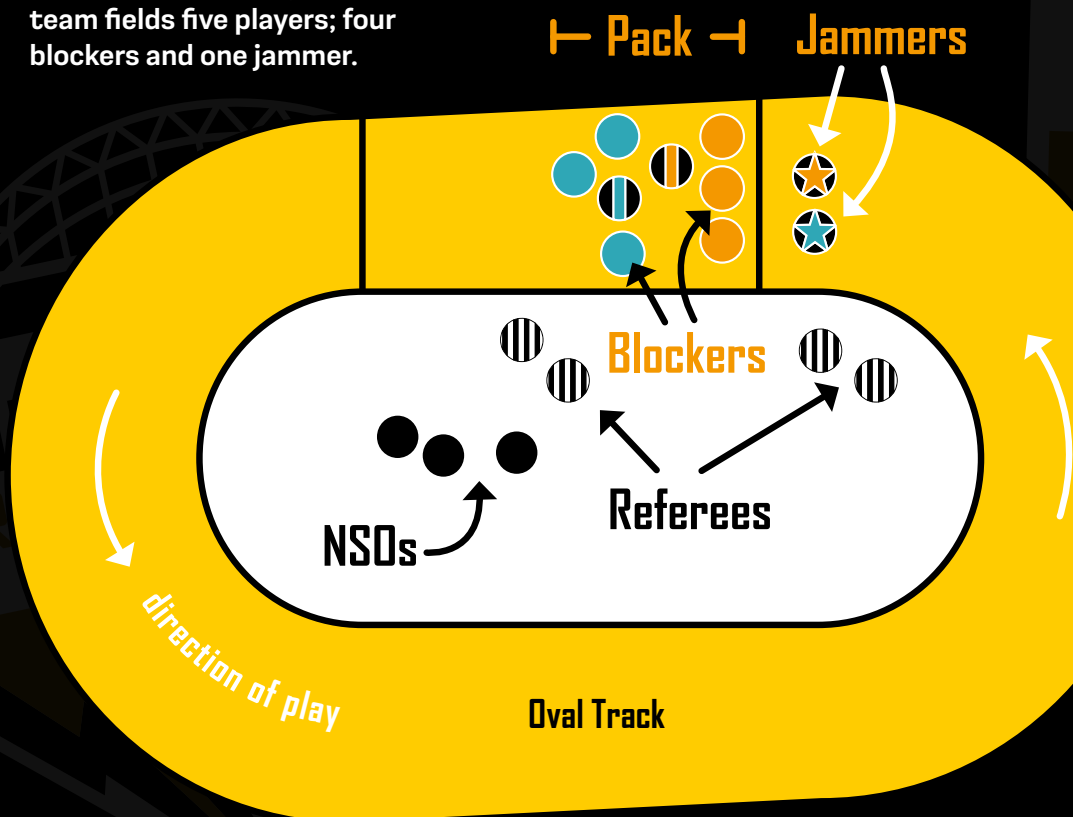
Roller derby is a contact sport played by two teams of up to 15 players. The game is played in a counter-clockwise direction around an oval track.

The game consists of two halves of 30 minutes with each half consisting of a series of short **Jams**, with each jam lasting a maximum of two minutes.

At the start of each jam each team fields five players; four blockers and one jammer.

The jammer is the skater who scores points by lapping the players on the opposing team. The blockers attempt to hinder the opposing jammer while assisting their own jammer: playing both defence and offence at the same time.

The first jammer out of the pack gains **lead jammer** status for that jam which means they have the ability to strategically **call off the jam**. However, if the jammer goes to the penalty box, they lose that lead jammer status.



The first lap of the track is called the **Initial pass** and no points are scored.

Once a jammer has completed their initial pass, they can score points. A jammer scores one point for each player of the opposing team they pass as long as they do it **in bounds and legally**.

Jammers continue to skate round the track scoring points for the full two minutes of the jam or until the lead jammer calls off the jam. The lead jammer does this by **repeatedly placing both their hands on their hips**.

JAMMER

The jammer is the player wearing the **Star Helmet Cover** on their helmet. They always start each jam behind the jam line behind the pack. The lead jammer is the first jammer to get through the pack and the opposing team's blockers legally. The lead jammer (only) can call off the jam to prevent the other jammer from scoring points.



PIVOT

The pivot is a blocker and can be identified by the **Stripe Helmet Cover** on their helmet. They can be converted to a jammer during a jam if a legal **Star Pass** manoeuvre is successful.

BLOCKER

Blockers prevent the opposing jammer from passing through the pack while assisting their jammer to get through at the same time. They are responsible for maintaining the pack.

PENALTIES

Referees determine penalties. A penalty will land a player in the penalty box for 30 seconds. A penalty is when a player's actions significantly affects game play. If a jam ends before a player gets out of the box, the player remains in the penalty box during the subsequent jam until the penalty is completed.

NSOs

Non-Skating Officials (NSOs) are crucial, off-skate officials responsible for maintaining the integrity, flow, and accuracy of a game. They manage the scoreboard, track penalties, time jams and penalties, and handle official paperwork.



NEWCASTLE ROLLER DERBY



Where we train...

Sundays 10am-12:30pm
Benfield Centre for Sport

Mondays 5:50-7:50pm
The Dome, Walker

Wednesdays 7:30-9pm
The Dome, Walker

Thursdays 7:30-9pm
Benfield Centre for Sport

Our A-Team:
Canny
Belters

Our B-Team:
Whippin'
Hinnies



Credits: Life thru Argo's lens, Roller Derby on Film, Alla Maistrenko, Dave Moore, Real Time Events, Lara Shardlow, Paul Jones

Keep in the loop with our New Skater Intake Courses, Taster sessions, Bootcamps and our next Home game on the 27th June 2026!

Follow us on social media or email us at bod@newcastlerollerderby.co.uk